

LANDSCAPE CONTRACTOR NOTES

ALL PLANT MATERIAL SHALL BE FLORIDA #1 OR BETTER. PLANTS WILL BE INSPECTED BY THE LANDSCAPE ARCHITECT. THOSE PLANTS THAT DO NOT MEET THE SPECIFICATIONS IN SIZE OR GRADE WILL BE REJECTED.

THE LANDSCAPE CONTRACTOR SHALL HAVE A COMPETENT FOREMAN IDENTIFIED AT THE BEGINNING OF THE JOB WHO WILL BE ON THE JOB THROUGHOUT THE INSTALLATION OF PLANTING. THIS PERSON SHALL BE RESPONSIBLE FOR DIRECTING THE CREW AND ANY SUBCONTRACTORS WORKING FOR THE LANDSCAPE CONTRACTOR AND SHALL ACT AS THE LANDSCAPE CONTRACTOR'S REPRESENTATIVE TO THE OWNER AND LANDSCAPE ARCHITECT.

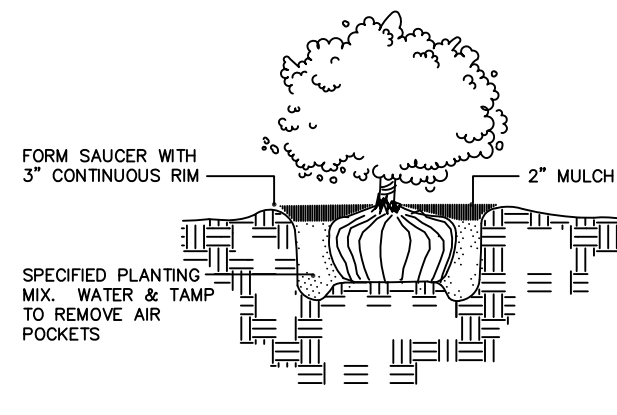
THE LANDSCAPE CONTRACTOR SHALL LAY OUT AREAS TO BE PLANTED AND ARRANGE A MEETING WITH THE LANDSCAPE ARCHITECT FOR APPROVAL BEFORE PLANTING.

THE LANDSCAPE CONTRACTOR SHALL BE RESPONSIBLE FOR THE PREPARATION OF ALL AREAS TO RECEIVE PLANTS. ALL PLANTS, GRASSES AND WEEDS SHALL BE REMOVED BY HAND, ROTOTILLING OR BY SCRAPING.

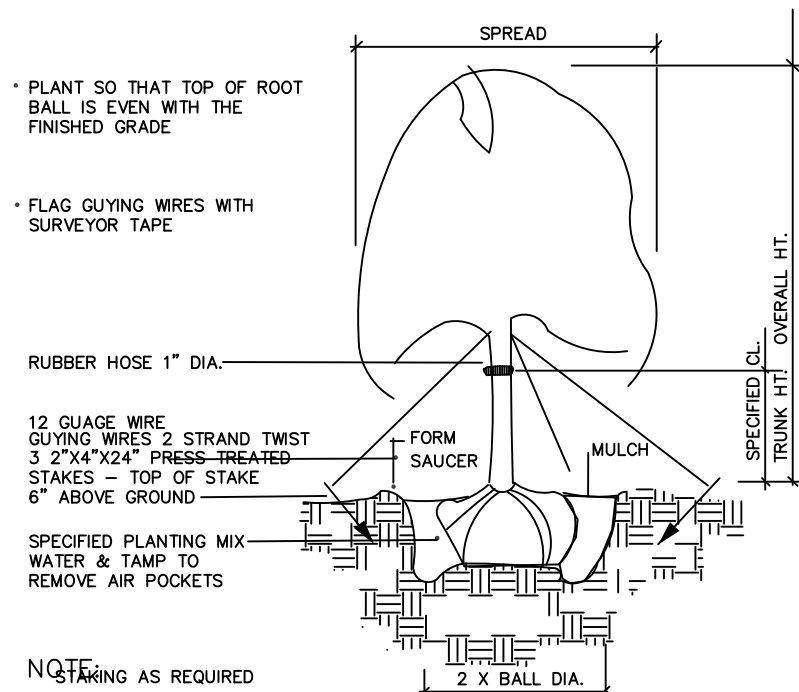
WITH WATER PRIOR TO PLANTING. IF WATER DOES NOT COMPLETELY DRAIN FROM HOLE WITHIN FOUR HOURS, CONTACT THE LANDSCAPE ARCHITECT FOR APPROVAL BEFORE PLANTING. PLANT HOLES ARE TO BE BACKFILLED WITH A HOMOGENEOUS SOIL MIX CONSISTING OF 2 PARTS SANDY TOPSOIL, 2 PARTS PEAT MOSS AND 1 PART COV MANURE OR MILKINGITE. AGRIFORM 20-10-15 PLANTING TABLETS SHALL BE ADDED TO EACH PLANT HOLE ACCORDING TO THE MANUFACTURER'S RECOMMENDED APPLICATION RATES. BACKFILL HALF WAY UP THE ROOTBALL, PLACE THE TABLETS BESIDE THE ROOTBALL, ABOUT 1 INCH FROM THE ROOT TIPS. DO NOT PLACE TABLETS IN BOTTOM OF HOLE.

THE CONTRACTOR SHALL PROVIDE THE SPECIFIED MULCH. INSTALL 3" DEPTH OF SPECIFIED MULCH TO ALL AREAS INDICATED ON THE PLAN. THE MULCH SHALL BE INSTALLED AS SHOWN ON THE DETAILS TO ENSURE THAT IT IS NOT INSTALLED TOO CLOSE TO THE PLANT TRUNK OR STEM.

THE LANDSCAPE CONTRACTOR SHALL GUARANTEE THAT ALL PLANT MATERIAL SHALL BE ALIVE AND THRIVING FOR A PERIOD OF ONE YEAR FOLLOWING PLANTING. THE LANDSCAPE CONTRACTOR SHALL REPLACE DEAD OR SICK PLANTS AT NO ADDITIONAL COST TO THE OWNER.



SHRUB PLANTING
SCALE: NOT TO SCALE



TREE PLANTING - GUY WIRES
SCALE: NOT TO SCALE

PLANT MATERIAL LIST

TREES & PALMS (* indicates native tree)

Code Name	Quantity	Scientific Name	Common Name	Planting Size
* IC	26	ILEX CASSINE	DAHDOON HOLLY	12' X 5', 4'CT 4" DBH
* IXA	26	ILEX ATTENUATA	EAST PALATKA HOLLY	12' X 5', 4'CT 4" DBH
* MAG	18	MAGNOLIA GRANDIFLORA	BRACKEN'S BROWN BEAUTY	12' X 5', 4'CT 4" DBH
* QV	3	QUERCUS VIRGINIANA	LIVE OAK	12' X 5', 4'CT 4" DBH

SHRUBS & GROUNDCOVERS

Code Name	Quantity	Scientific Name	Common Name	Planting Size
* HP	266	HAMELIA PATENS 2'	FIREBUSH	24" X 18" #3, 24" OC
* HP	293	HAMELIA PATENS 4'	FIREBUSH	42" X 36" #10, 48" OC

OTHER MATERIALS

MULCH	32	CU. YDS. ENVIRO MULCH (EST.)
SDD	34,000	SQ. FT. BAHIA SDD (EST.)

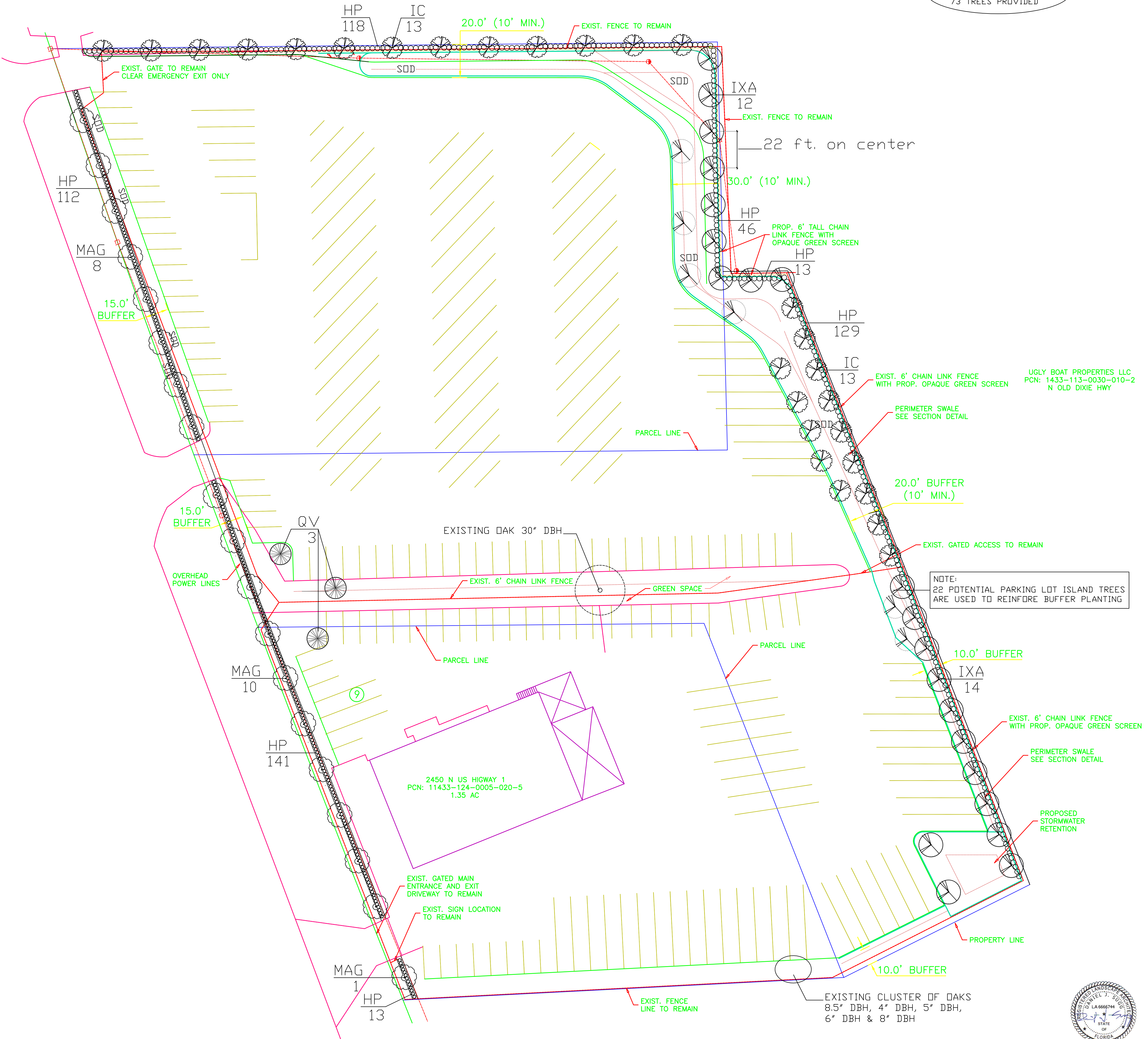
TREE CALCULATIONS:

RDW WEST PL 610 L. FT. - TOTAL 70' ACCESS WAY = 540 L. FT.
 NORTH PL 401 L. FT. - 15' ACCESS WAY = 386 L. FT.
 EAST PL 138 L. FT.
 NORTH PL 39 L. FT.
 EAST PL 396 L. FT.
 SOUTH PL EXEMPT 0 L. FT.

TOTAL 1499 L. FT. DIVIDED BY 30 = 49.9 / 50 TREES PERIMETER TREES REQUIRED

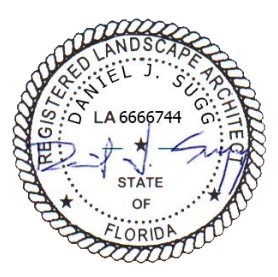
22 PARKING ISLAND TREES IF REQUIRED

72 TREES REQUIRED
73 TREES PROVIDED



NOTE: 22 POTENTIAL PARKING LOT ISLAND TREES ARE USED TO REINFORCE BUFFER PLANTING

UGLY BOAT PROPERTIES LLC
PCN: 1433-113-0030-010-2
N OLD DIXIE HWY



SHEET L-2 OF TWO	SCALE: 1" = 30'	LANDSCAPE PLAN STOW & GO STORAGE	DANIEL J. SUGG LANDSCAPE ARCHITECT / SITE PLANNER POST OFFICE BOX 335, JENSEN BEACH, FL 34958 PHONE: (772) 485-1776	DATE: 6/11/22
				REV 10/16/23
				REV 12/8/23 add 2 trees east & calc.
				REV 12/20/23 north & south combined
				REV 12/30/23 e. palatka noted as native
				REV 1/17/24 add trees, shrubs s. e. p.l.
				REV 1/22/24 tree calculations