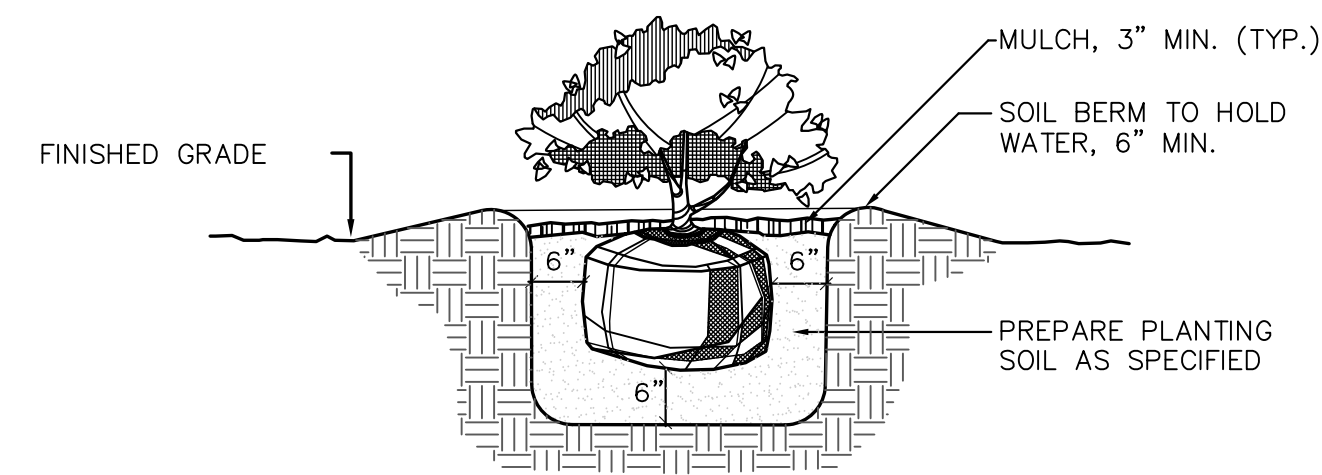
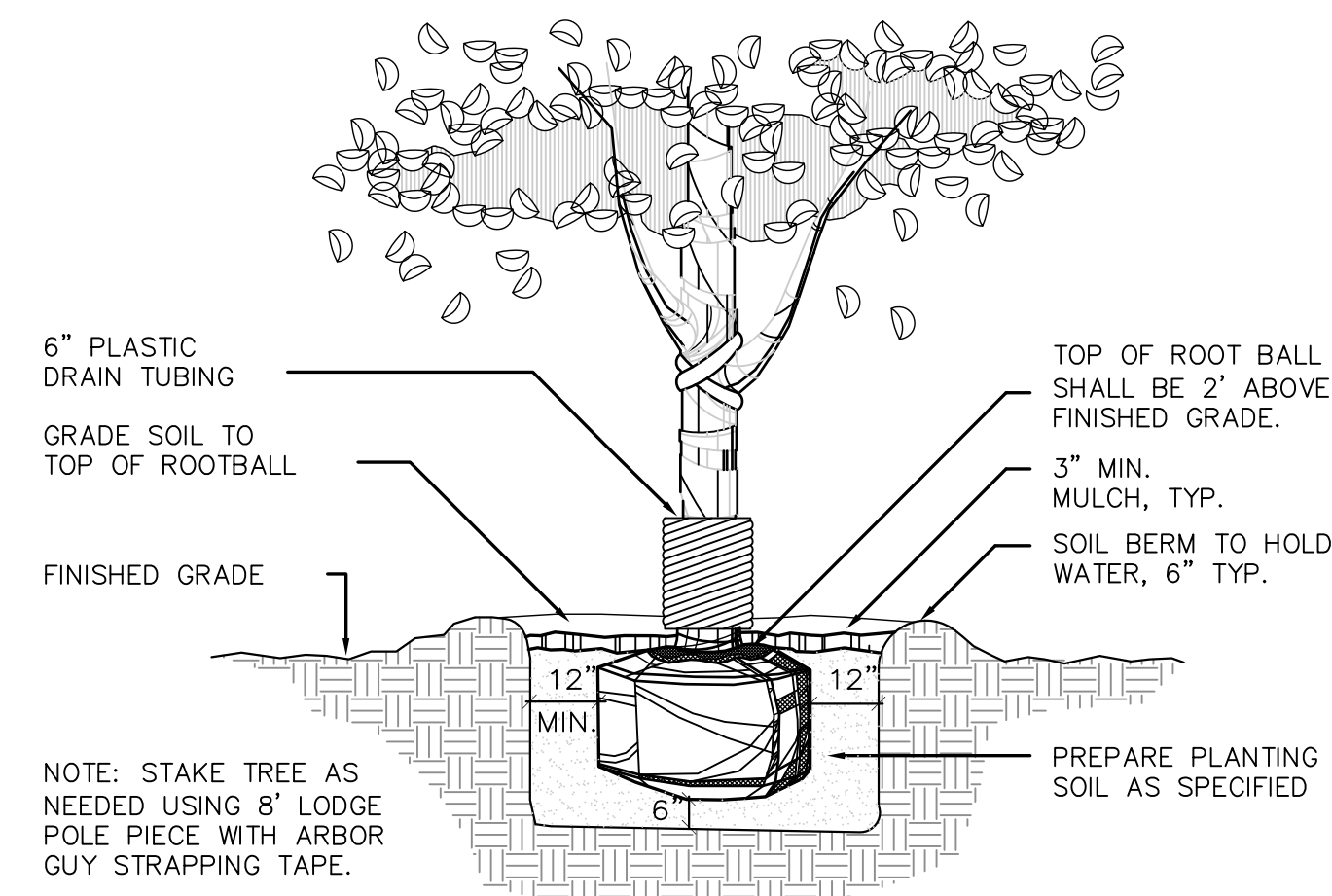


## SHRUB PLANTING DETAIL



## TREE PLANTING DETAIL



## TREE CALCULATIONS

ROW WEST PL 370 LF - TOTAL 55' ACCESS WAY=	315 LF
NORTH PL 401 LF - 15' ACCESS WAY=	386 LF
EAST PL=	138 LF
NORTH PL=	39 LF
EAST PL (EXEMPT, SCREED ABUTTING PROP. LANDSCAPE BARRIER)=	0 LF
SOUTH PL(EXEMPT, SCREEN ABUTTING PROP. CONCRETE WALL)=	0 LF
TOTAL=	878 LF / 30

TREES PERIMETER REQUIRED=	29
INTERIOR PARKING ISLAND TREES=	22
EXISTING TREE CREDITS=	(14)
TOTAL TREES REQUIRED=	37
TOTAL TREE PROVIDED=	40

## LANDSCAPE CONTRACTOR NOTES

ALL PLANT MATERIAL SHALL BE FLORIDA #1 OR BETTER. PLANTS WILL BE INSPECTED BY THE LANDSCAPE ARCHITECT. THOSE PLANTS THAT DO NOT MEET THE SPECIFICATIONS IN SIZE OR GRADE WILL BE REJECTED.

THE LANDSCAPE CONTRACTOR SHALL HAVE A COMPETENT FORMAN IDENTIFIED AT THE BEGINNING OF THE JOB WHO WILL BE ON THE JOB THROUGHOUT THE INSTALLATION OF PLANTING. THIS PERSON SHALL BE RESPONSIBLE FOR DIRECTING THE CREW AND ANY SUBCONTRACTORS WORKING FOR THE LANDSCAPE CONTRACTOR AND SHALL ACT AS THE LANDSCAPE CONTRACTOR'S REPRESENTATIVE TO THE OWNER AND LANDSCAPE ARCHITECT.

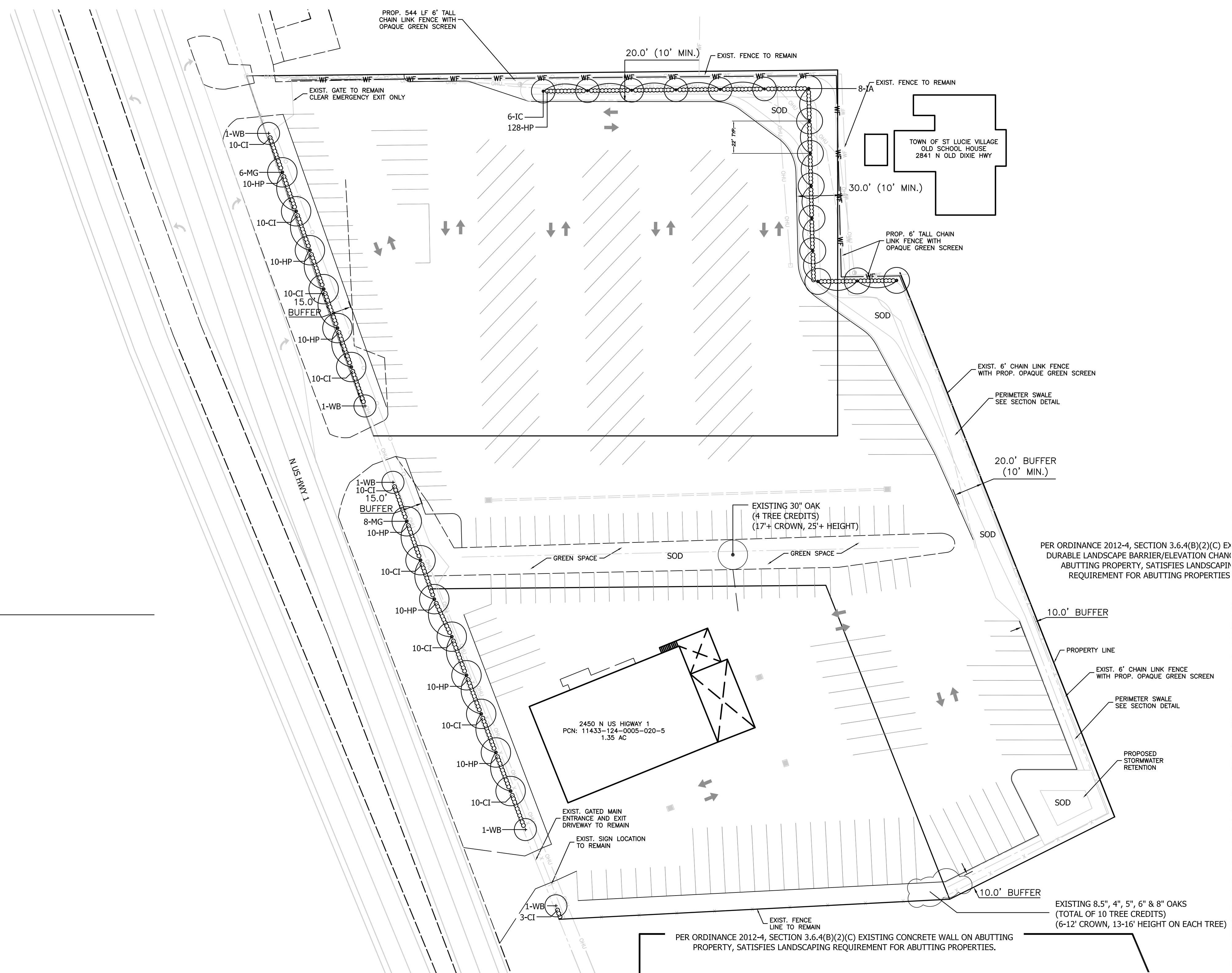
THE LANDSCAPE CONTRACTOR SHALL LAY OUT AREAS TO BE PLANTED AND ARRANGE A MEETING WITH THE LANDSCAPE ARCHITECT FOR APPROVAL BEFORE PLANTING.

THE LANDSCAPE CONTRACTOR SHALL BE RESPONSIBLE FOR THE PREPARATION OF ALL AREAS TO RECEIVE PLANTS, ALL PLANTS, GRASSES AND WEEDS SHALL BE REMOVED BY HAND, ROTOTILLING OR BY SCRAPING.

WITH WATER PRIOR TO PLANTING, IF WATER DOES NOT COMPLETELY DRAIN FROM HOLE WITHIN 4 HOURS, CONTACT THE LANDSCAPE ARCHITECT FOR APPROVAL BEFORE PLANTING. PLANT HOLES ARE TO BE BACKFILLED WITH HOMOGENEOUS SOIL MIX CONSISTING OF 2 PARTS SANDY TOPSOIL, 2 PARTS PEAT MOSS AND 1 PART COW MANURE OR MILORGANITE. AGRIFORM 20-10-15 PLANTING TABLETS SHALL BE ADDED TO EACH PLANT HOLE ACCORDING TO THE MANUFACTURERS RECOMMENDED APPLICATION RATES. BACKFILL HALFWAY UP THE ROOTBALL, PLACE THE TABLETS BESIDE THE ROOTBALL ABOUT 1 INCH FROM THE ROOT TIPS. DO NOT PLACE TABLETS IN BOTTOM OF HOLE.

THE CONTRACTOR SHALL PROVIDE THE SPECIFIED MULCH. INSTALL 3\"/>

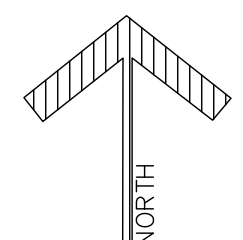
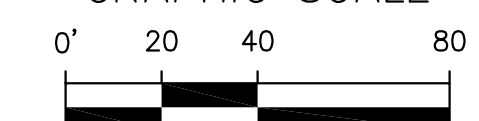
THE LANDSCAPE CONTRACTOR SHALL GUARANTEE THAT ALL PLANT MATERIAL SHALL BE ALIVE AND THRIVING FOR A PERIOD OF ONE YEAR FOLLOWING PLANTING. THE LANDSCAPE CONTRACTOR SHALL REPLACE DEAD OR SICK PLANTS AT NO ADDITIONAL COST TO THE OWNER.



## PLANT SCHEDULE

TREES & PALMS	*INDICATES NATIVE TREE			
IC*	9	ILEX CASSINE	DAHOON HOLLY	MIN. 12' HT., 5' SPR., 2" CAL., FL.#1
IA*	12	ILEX ATTENUATA	'EAST PALATKA' HOLLY	MIN. 12' HT., 5' SPR., 2" CAL., FL.#1
MG*	14	MAGNOLIA GRANDIFLORA 'LITTLE GEM'	'LITTLE GEM' MAGNOLIA	MIN. 12' HT., 5' SPR., 2" CAL., FL.#1
WB	5	WODYETIA BIFURCATA	FOXTAIL PALM	FIELD GROWN, 12' CT., FL.#1
<b>SHRUBS</b>				
CI	93	CHRYSOBALANUS ICACO	COCOPLUM	3 GAL., MIN. 18" HT.
HP	204	HAMELIA PATENS	FIREBUSH	3 GAL., MIN. 18" HT.
<b>OTHER MATERIALS</b>				
SOD		PASPALUM NOTATUM	'ARGENTINE' BAHIA	
MULCH			ENVIROMENTAL MULCH	

GRAPHIC SCALE



DRAWN BY: JSY

CHECKED BY:

DATE: FEBRUARY 14, 2024

REVISIONS:

DRAWING SCALE: AS SHOWN

PROJECT NUMBER: 24-004

SHEET: L-101