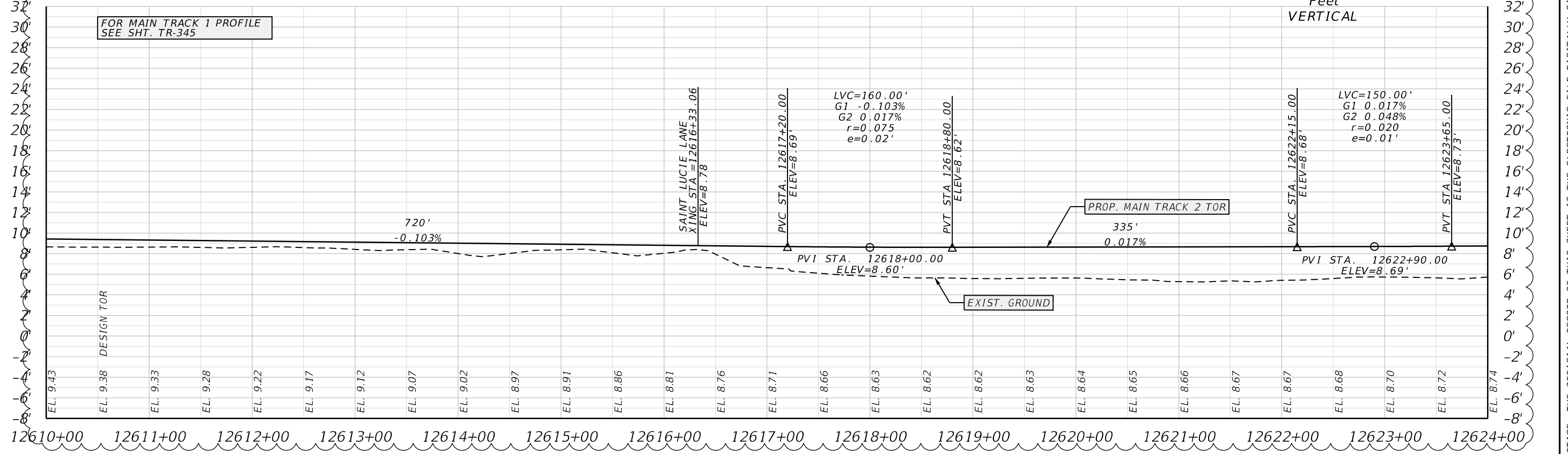
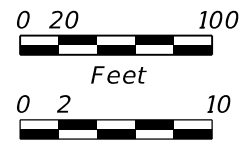


- NOTES:**
1. SEE DWG TR-11 FOR REMOVAL AND DEMOLITION NOTES.
 2. SEE DWG TR-19 TO TR-52 FOR TRACK AND CROSSOVER GEOMETRY DATA.
 3. SEE ROADWAY PLANS FOR ADDITIONAL WORK AT ROAD CROSSINGS.
 4. SEE STANDARD DWG FOR TURNOUT CONSTRUCTION DETAILS.
 5. INSTALL TRANSITION TIES & INSULATED JOINTS PER STANDARD DWG. ES6007.1, ES7030.1 AND SD-90.



| REVISIONS | | DATE | DESCRIPTION | DAVID S. BURWELL, P.E. P.E. LICENSE NUMBER 55853 URS CORPORATION SOUTHERN 7800 CONGRESS AVENUE, SUITE 200 BOCA RATON, FL 33487 CERTIFICATE OF AUTHORIZATION EB 00000002 | ALL ABOARD FLORIDA | | | SEGMENT D09 | SCALE: 1"=100' | SHEET NO. |
|-----------|---------------------------|------|-------------|--|--------------------|-----------------------------------|----------------------|-------------|-------------------|-----------|
| DATE | DESCRIPTION | | | | AAF CONTRACT | SECTION | COUNTY | | | |
| 8/16/19 | REV1 - MT1 & MT2 VERTICAL | | | | D09 | ST. LUCIE MARTIN PALM BEACH | TRACK PLAN & PROFILE | 8/16/2019 | TR-108 | |