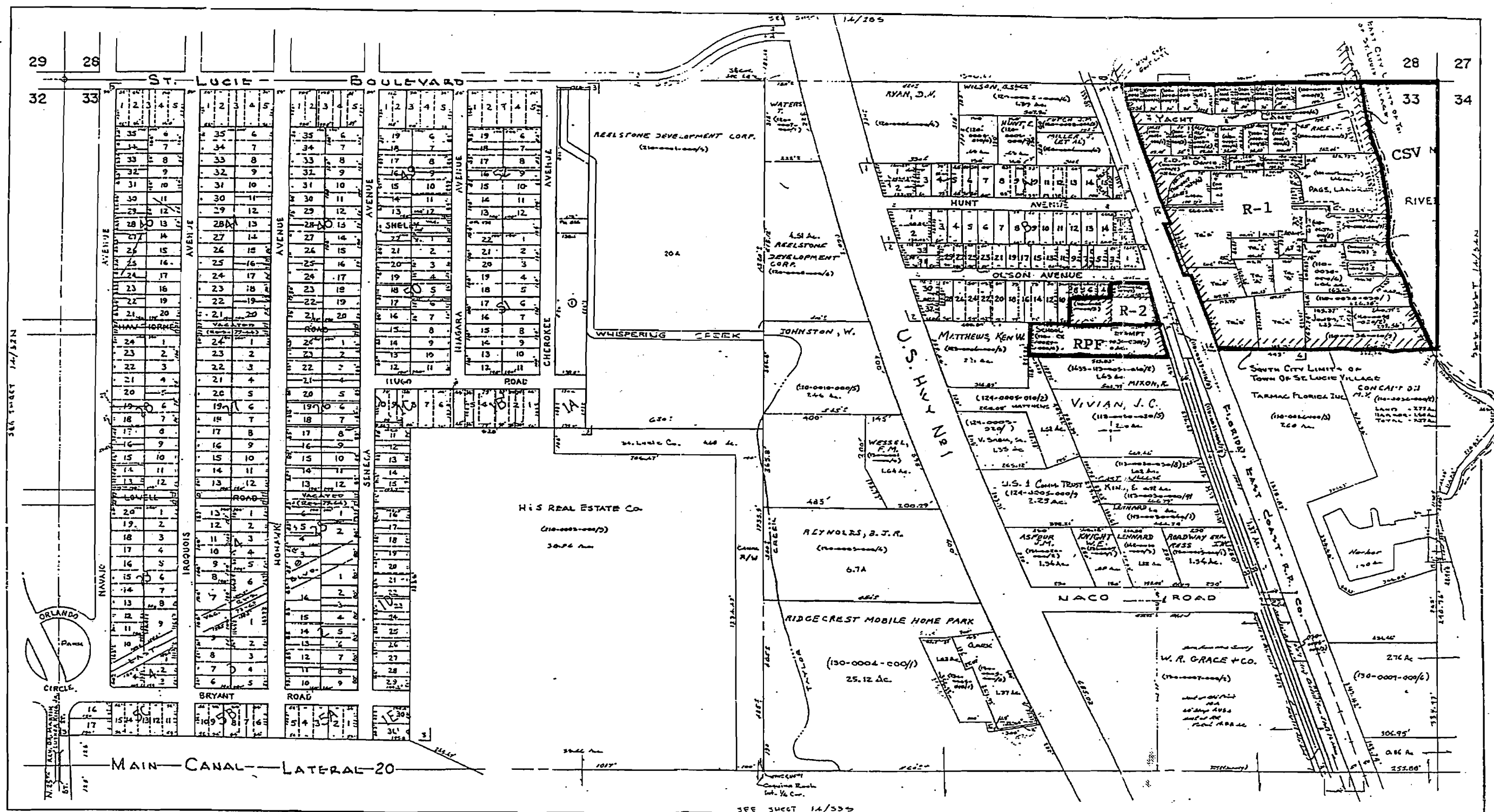


APPENDIX A TO THE ST. LUCIE VILLAGE 1995 ZONING ORDINANCE

OFFICIAL ZONING ATLAS

THIS MAP HAS BEEN COMPILED FROM THE MOST AUTHENTIC INFORMATION AVAILABLE AND NEITHER ST. LUCIE COUNTY NOR HUNNIGUTY AND ASSOCIATES, INC. ASSUMES RESPONSIBILITY FOR ERRORS OR OMISSIONS CONTAINED HEREON.



**SUBDIVISION INDEX**

| NO | NAME                       | I.D.     | RD | P. |
|----|----------------------------|----------|----|----|
| 1  | A.D. HUNT SUBDIVISION      | 1433-001 | 7  | 47 |
| 2  | OLSON'S SUBDIVISION        | 1433-002 | 8  | 57 |
| 3  | SAN LUCIE PLAZA - UNIT - 1 | 1426-702 | 9  | 57 |
| 4  | LIGHTLE 3/D                | 1433-503 | 8  | 27 |

PREPARED FOR  
*Douglas S. Purnham*  
 DOUGLAS S. PURNHAM  
 ST. LUCIE COUNTY PROPERTY APPRAISER

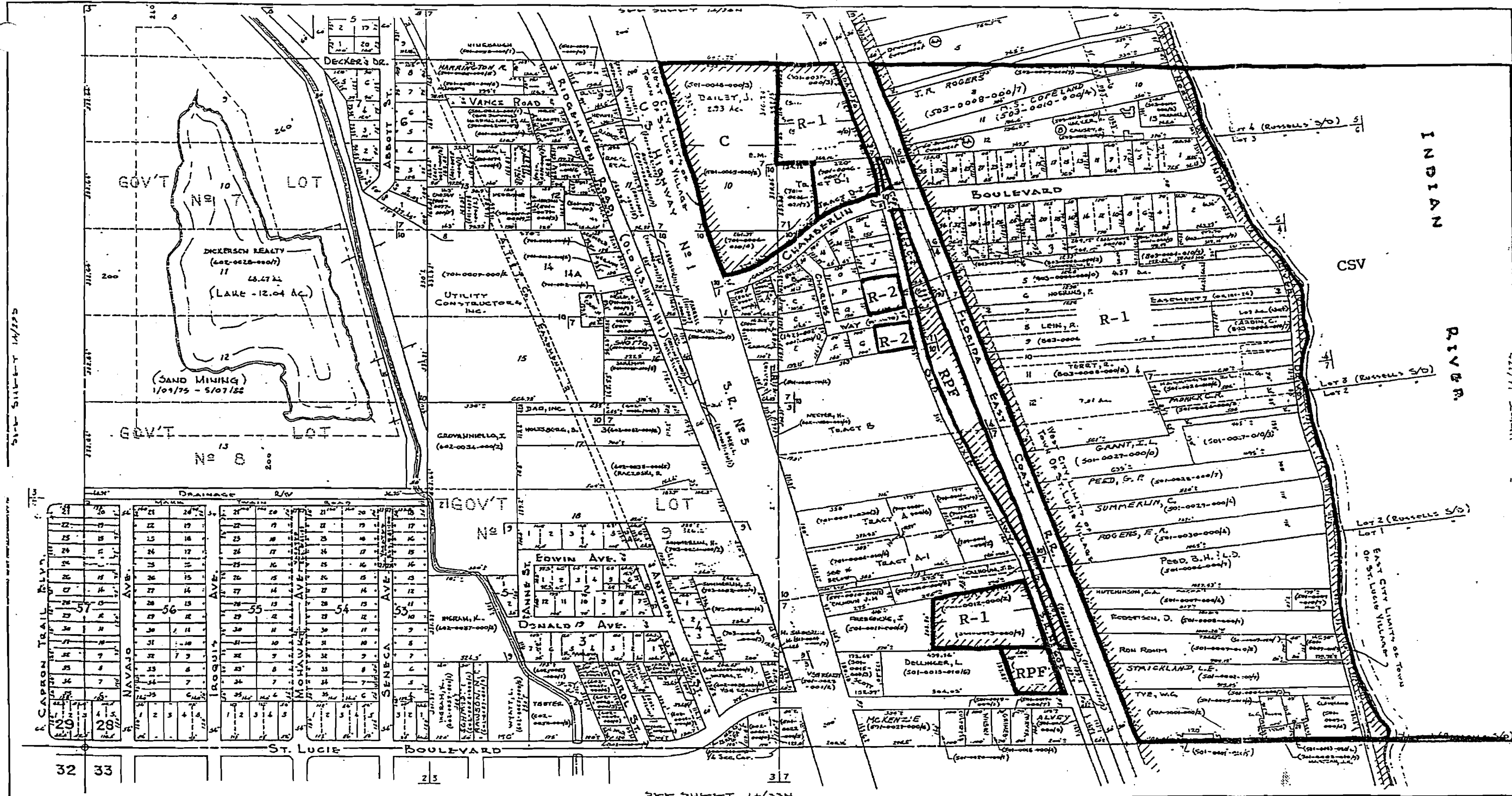


ASSESSMENT MAP  
 ST. LUCIE COUNTY, FLORIDA  
 COMPILED & DRAWN BY  
 HUNNIGUTY & ASSOCIATES, INC.  
 ST. PETERSBURG, FLORIDA

|          |           |  |
|----------|-----------|--|
| SECTION  | N/2 OF 33 | SHEET NUMBER<br><b>14</b>                |
| TOWNSHIP | 34 S.     |  |
| RANGE    | 40 E.     | COMPILED & DRAWN, 1960<br>REVISION DATES |
| TRACING  | PRINT     |  |

TRW-REDI  
 1-800-345-7334

SCALE IN 1/16 OF AN INCH



SUBDIVISION INDEX

| No | NAME                           | I.D.     | P.R.       | P.C. | NR |
|----|--------------------------------|----------|------------|------|----|
| 1. | CHAMBERLIN BOULEVARD HEIGHTS   | 1428-802 | UNRECORDED |      | 7  |
| 2. | SAN LUCIE PLAZA                | 702      |            |      | 5  |
| 3. | HOGG'S SUBDIVISION             | 602      |            |      | 1  |
| 4. | KOSLEGARDS SUBDIVISION (LOT 3) | 503      |            |      | 1  |
| 5. | " (LOT 4)                      | 503      |            |      | 1  |
| 6. | OCEAN BOULEVARD PARK           | 801      |            |      | 7  |

| NAME                  | I.D.     | P.R. | P.C. | NR | NAME                  | I.D.     | P.R. | P.C. |
|-----------------------|----------|------|------|----|-----------------------|----------|------|------|
| RUSSELLS SUBDIVISION  | 1428-501 | 1    | 186  | 7  | RUSSELLS SUBDIVISION  | 1428-501 | 1    | 186  |
| FORT PIERCE HIGHLANDS | 204      | 10   | 27   | 8  | FORT PIERCE HIGHLANDS | 204      | 10   | 27   |
| SINDON'S SUBDIVISION  | 703      | 10   | 57   | 9  | SINDON'S SUBDIVISION  | 703      | 10   | 57   |
| TAYLOR SUBDIVISION    | 701      | 9    | 12   | 10 | TAYLOR SUBDIVISION    | 701      | 9    | 12   |

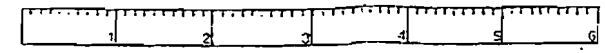
THIS MAP TO BE USED FOR TAX ASSESSMENT PURPOSES ONLY

\* SOUTH LINE OF LOT 2 - RUSSELLS S/D AS SHOWN ON TAYLOR S/D

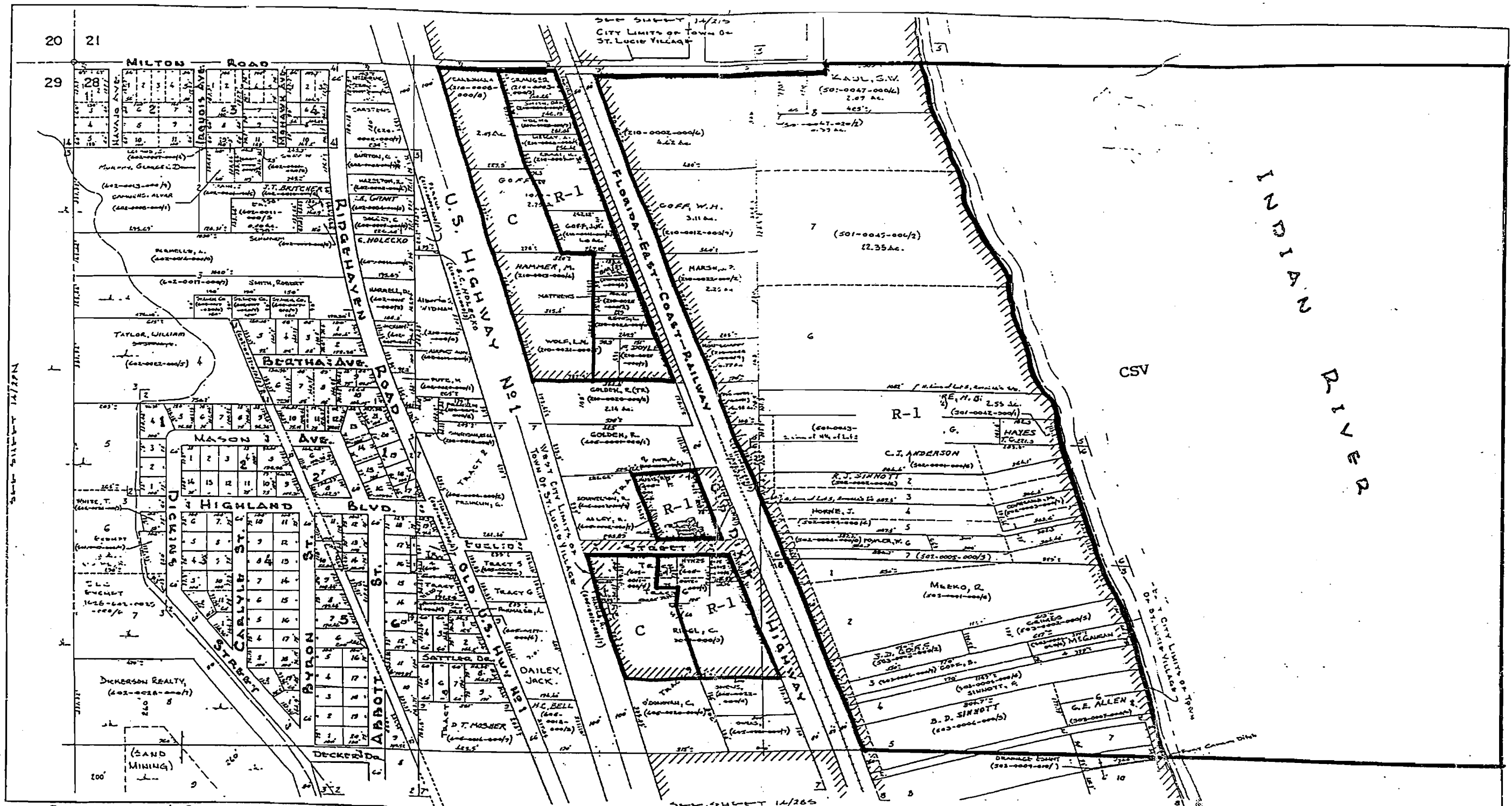
PREPARED FOR  
*Douglas S. Putnam*  
 DOUGLAS S. PUTNAM  
 ST. LUCIE COUNTY PROPERTY APPRAISER

|  |   |                                  |
|--|---|----------------------------------|
|  | SECTION <u>5 1/2 OF 28</u>                  | SHEET NUMBER<br><u>14</u><br>285 |
|  | TOWNSHIP <u>34 S. 1736'</u>                 |                                  |
|  | RANGE <u>40 E.</u>                          |                                  |
|  | ASSESSMENT MAP<br>ST. LUCIE COUNTY, FLORIDA |                                  |

TRW-REDI  
1-800-345-7334



SCALE IN 1/10 OF AN INCH




**SUBDIVISION INDEX**

| No | NAME                            | I.D.     | P.B. | Pa. |
|----|---------------------------------|----------|------|-----|
| 1  | ENGEL'S SUBDIVISION             | 1428-605 | 4    | 10  |
| 2  | FOOT PIERCE HIGHLANDS-UNIT No 1 | - 604    | 10   | 27  |
| 3  | HOGAN SUBDIVISION               | - 602    | 1    | 17  |
| 4  | RIVERVIEW SUBDIVISION (REVISED) | - 601    | 6    | 20  |
| 5  | RUSSELL'S SUBDIVISION           | - 501    | 1    | 26  |
| 6  | STUART SUBDIVISION              | - 502    | 1    | 46  |

| No | NAME                     | I.D.     | P.B. | Pa.   |
|----|--------------------------|----------|------|-------|
| 7  | SURGE HIGHTS             | 1428-605 | 7    | 14    |
| 8  | KOBLER'S BE-SUB ON LOT 4 | - 503    | 1    | 37    |
| 9  | SUBDIVISION OF TRACT 8   | - 606    |      | MISC. |

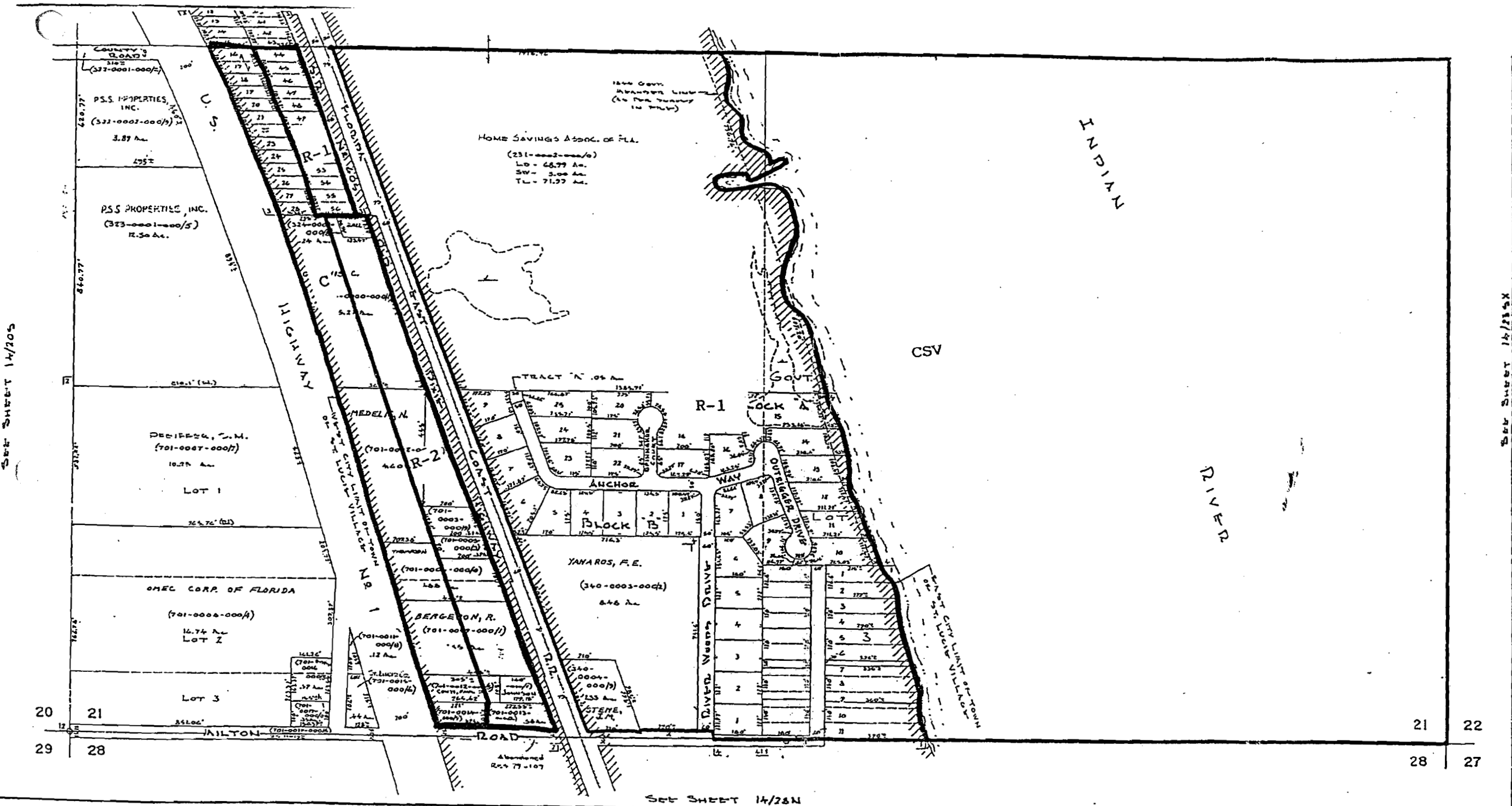
THIS MAP IS REFERRED TO FOR TAX ASSESSMENT PURPOSES ONLY  
 PREPARED FOR  
*Douglas S. Putnam*  
 DOUGLAS S. PUTNAM  
 ST. LUCIE COUNTY PROPERTY APPRAISER

|  |                |            |                                  |
|--|----------------|------------|----------------------------------|
| <br>SCALE 1" = 200' | SECTION        | N/2 of 28  | SHEET NUMBER<br><b>14</b><br>28N |
|  | TOWNSHIP       | 34 S. 025N |                                  |
|  | RANGE          | 40 E.      |                                  |
|  | ASSESSMENT MAP |            |                                  |
| ST. LUCIE COUNTY, FLORIDA  |                |            |                                  |

TRW-REDI  
 1-800-345-7334  
 SCALE IN 1/16 OF AN INCH

SEE SHEET 14/205

SEE SHEET 14/211



SEE SHEET 14/28N

**SUBDIVISION INDEX**

| NAME                    | I.D.     | P.B. | Pa. |
|-------------------------|----------|------|-----|
| KODLE-GARDS SUBDIVISION | 1421-601 | 1    | 22  |
| CARLSBAND SUBDIVISION   | 1421-701 | 3    | 24  |
| HILLYVIEW SUBDIVISION   | 1421-603 | 7    | 22  |
| RIVER WOODS SUBDIVISION | 1421-602 | 10   | 4   |

PREPARED FOR  
*Douglas S. Putnam*  
DOUGLASS PUTNAM  
ST. LUCIE COUNTY PROPERTY APPRAISER

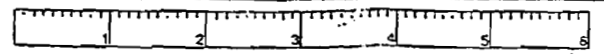
NOTE: THIS MAP WAS MADE FOR THE ST. LUCIE COUNTY PROPERTY APPRAISER'S OFFICE ONLY, AND DOES NOT NECESSARILY REFLECT AN ACTUAL SURVEY. THE ST. LUCIE COUNTY PROPERTY APPRAISER DOES NOT ASSUME RESPONSIBILITY FOR ERRORS OR OMISSIONS CONTAINED HEREON.



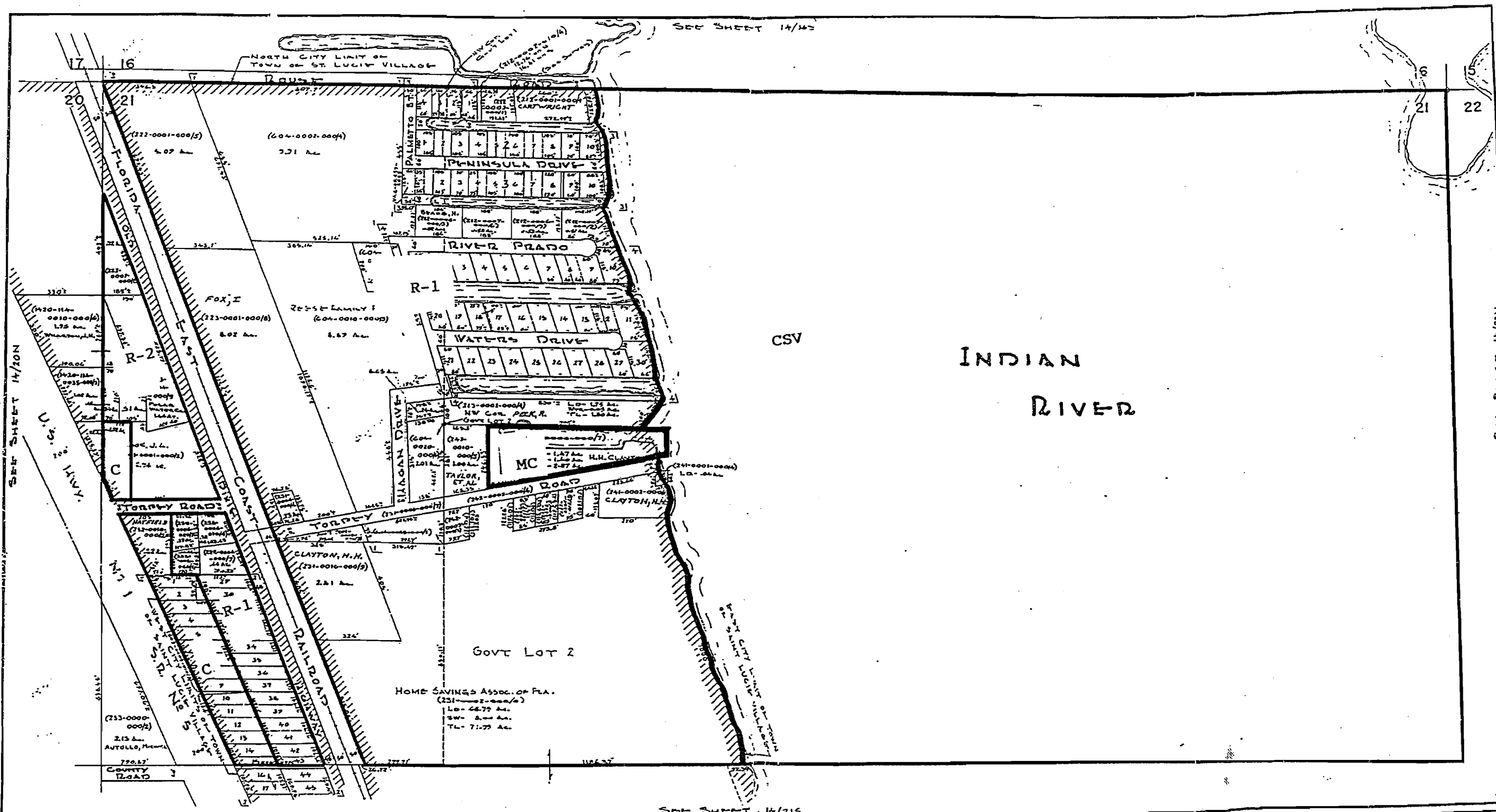
SECTION S 1/2 OF 21  
TOWNSHIP 34 S. RANGE 40 E.  
ASSESSMENT MAP  
ST. LUCIE COUNTY, FLORIDA

SHEET NUMBER  
14  
215

TRW-REDI  
1-800-345-7334



SCALE IN 1/10 OF AN INCH



**SUBDIVISION INDEX**

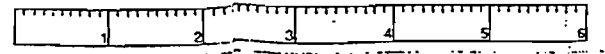
| NO | NAME                         | I.D.     | P.B. | Pa. |
|----|------------------------------|----------|------|-----|
| 1  | LAAGNOLD PLAT OF INDRIO PARK | 1421-604 | 7    | 5   |
| 2  | HILLVIEW                     | 1421-603 | 7    | 52  |
| 3  | RIVERSIDE HARBOR             | 1421-601 | 10   | 5   |
| 4  | RIVER GATE ESTATES           | 1421-602 | 10   | 66  |

PREPARED FOR  
*Douglas A. Putnam*  
 DOUGLASE PUTNAM  
 ST. LUCIE COUNTY PROPERTY APPRAISER

NOTE: THIS MAP WAS MADE FOR THE ST. LUCIE COUNTY PROPERTY APPRAISER'S PURPOSES ONLY, AND DOES NOT NECESSARILY REFLECT AN ACTUAL SURVEY. THE ST. LUCIE COUNTY PROPERTY APPRAISER DOES NOT ASSUME RESPONSIBILITY FOR ERRORS OR OMISSIONS CONTAINED HEREIN.

|                     |   |                                  |
|---------------------|---|----------------------------------|
| <br>SCALE 1" = 200' | SECTION <u>N 1/2 OF 21</u>                  | SHEET NUMBER<br><u>14</u><br>21N |
|                     | TOWNSHIP <u>34 S.</u>                       |                                  |
|                     | RANGE <u>40 E.</u>                          |                                  |
|                     | ASSESSMENT MAP<br>ST. LUCIE COUNTY, FLORIDA |                                  |

TRW•REDI  
 1-800-345-7334



SCALE IS 1/10 OF AN INCH



2283

SEE SHEET 14/17N

3281

18 17  
19 20

(121-0001-000/2)  
242.35 AC.

SUB-TROPICAL OPPORTUNE  
PROPERTIES, INC.  
(111-0025-000/5)  
21.53 AC

ST. LUCIE VILLAGE CITY LIMITS  
CARMEL, H.  
(111-0003-000/5)  
9.32 AC

R-2

STIMOS, N.M. (ET AL)  
(141-0002-000/i)  
16.05 AC.

ROWAND, S.  
(141-0003-000/4)  
2.9 AC

AUTULLO, M. & J.  
(141-0009-000/0)  
20.03 AC.

U.S. HIGHWAY NO 1

S.R. NO 5

SEE SHEET 11/19N

SEE SHEET 14/21N

SEE SHEET 14/20S

SUBDIVISION INDEX

NO. SUBDIVISION NAME I.D. PG / ORB PG.



SCALE 1" = 200 FT

PREPARED FOR  
*Douglas S. Putnam*  
DOUGLAS S. PUTNAM  
ST. LUCIE COUNTY PROPERTY APPRAISER

ST. LUCIE COUNTY

ASSESSMENT MAP  
THIS MAP HAS BEEN PREPARED FOR THE ST. LUCIE COUNTY PROPERTY APPRAISER'S PURPOSES ONLY, AND DOES NOT NECESSARILY REFLECT AN ACTUAL SURVEY. THE ST. LUCIE COUNTY PROPERTY APPRAISER DOES NOT ASSUME RESPONSIBILITY FOR ERRORS OR OMISSIONS CONTAINED HEREON.

SECTION N 1/2 OF 20  
TOWNSHIP 34 S.  
RANGE 40 E.

SHEET NUMBER  
14 / 20N

TRW-REDI  
1-800-345-7334



SCALE IS 1/10 OF AN INCH